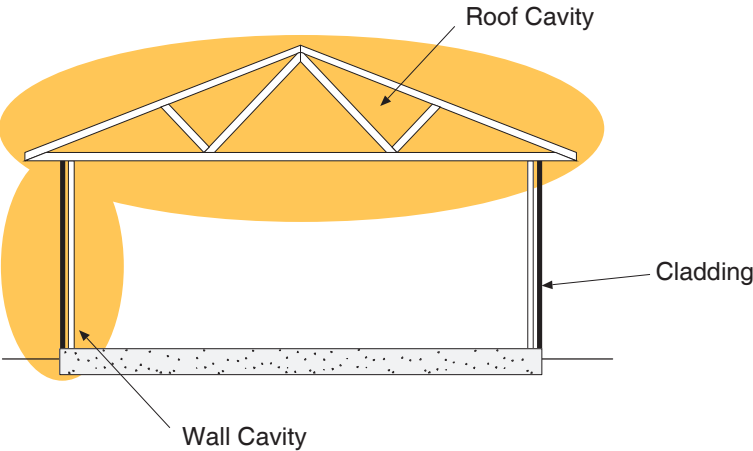


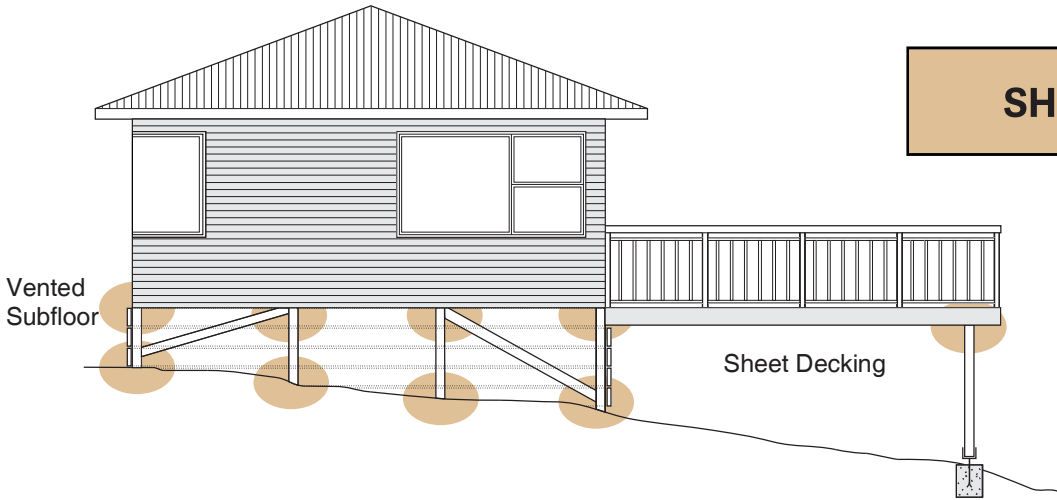
DURABILITY FLOW CHART

4. DURABILITY



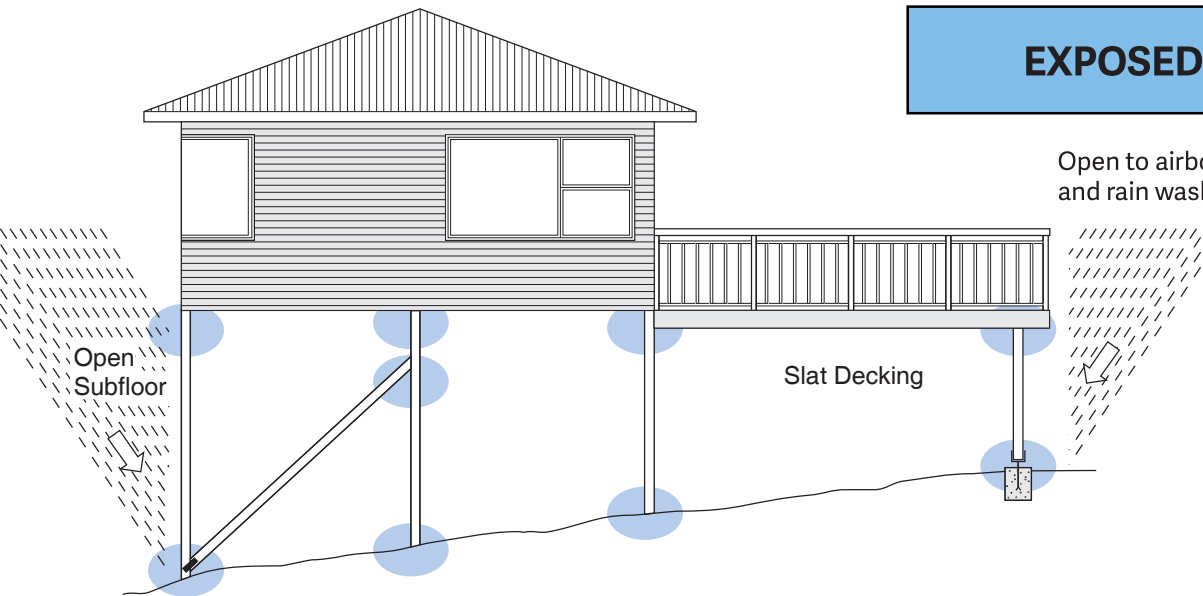
**CLOSED**

Dry, internal location, not subject to airborne salts or rain wetting.



**SHELTERED**

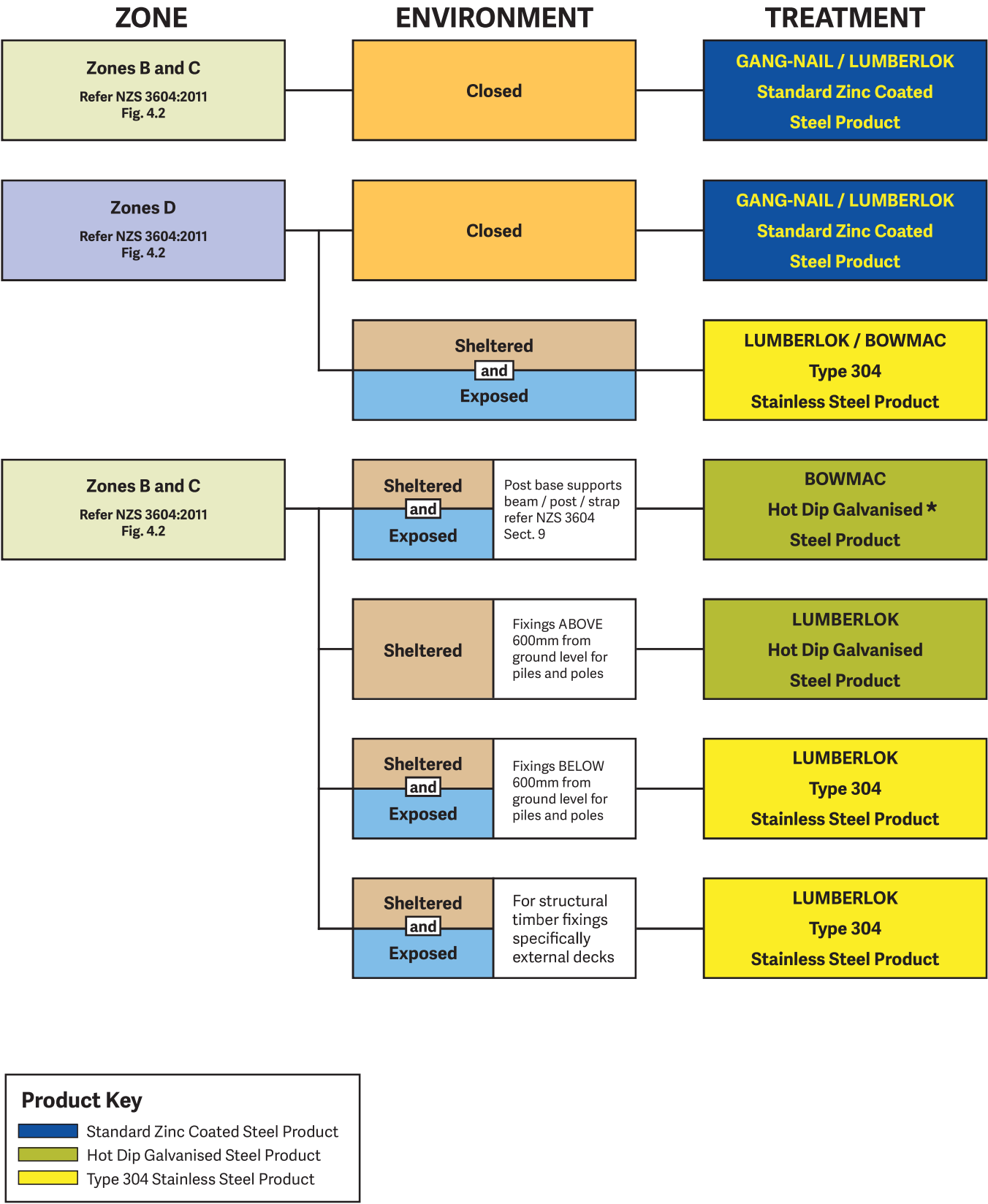
Open to airborne salts, but not rain washed.



**EXPOSED**

Open to airborne salts and rain washed.

DURABILITY FLOW CHART



\* See note 3 on Durability Product Selection Table.