

BUILDING WITH BOWMAC®

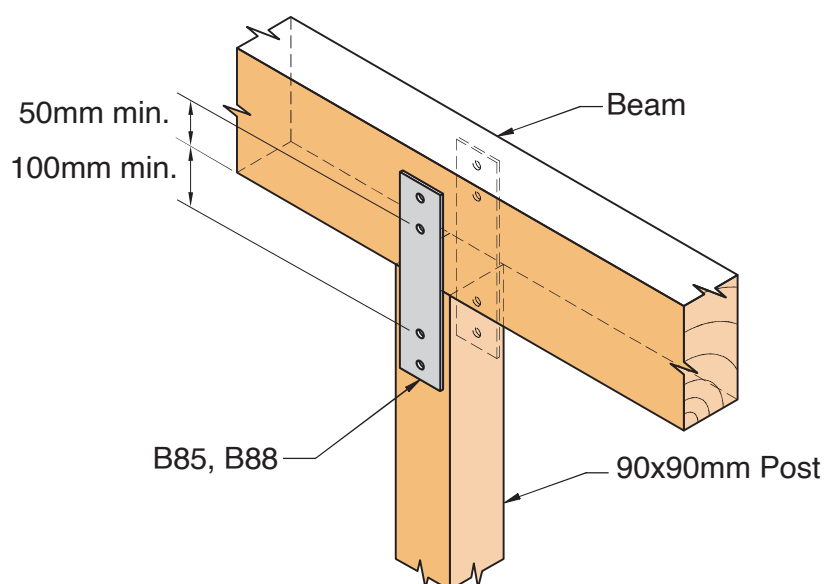
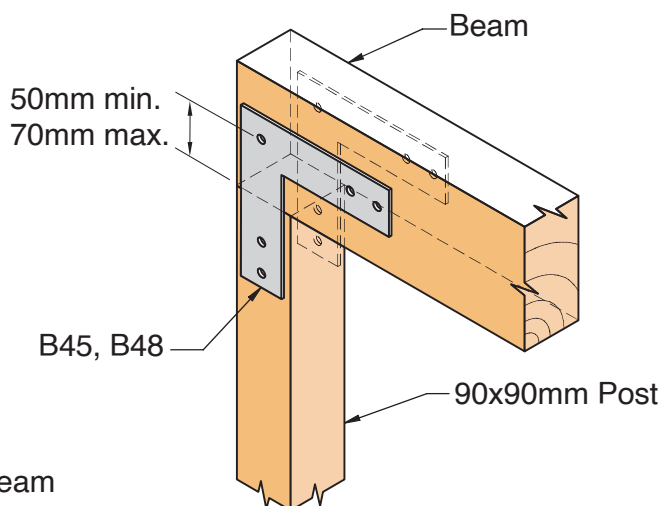
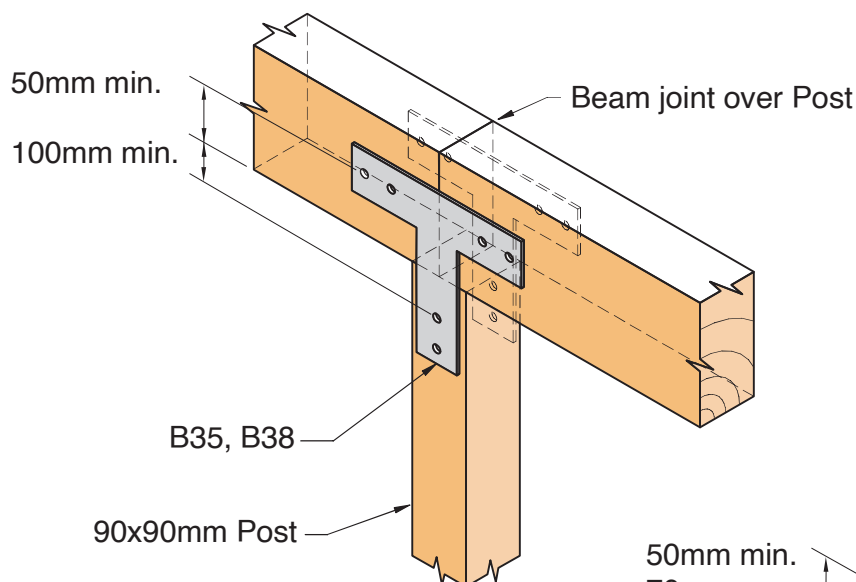
STRAP, T & L BRACKETS

BRACKET RANGE

- B35, B38 (T)
- B45, B48 (L)
- B85, B88 (Strap)

FIXING NOTE

- All bolt holes accommodate M12 Bolt unless noted.



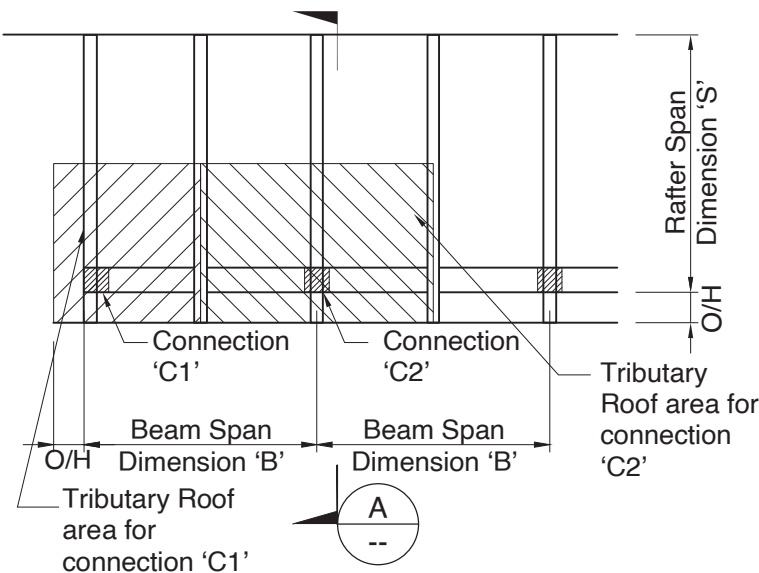
TYPICAL USE

Bracket	Uplift ULS Capacity per pair of brackets
B35 (T)	24.0kN
B38 (T)	30.3kN
B45 (L)	14.5kN
B48 (L)	25.0kN
B85, B88	16.3kN

NOTE

- All T's, L's & Straps have two width selections of 50mm and 75mm

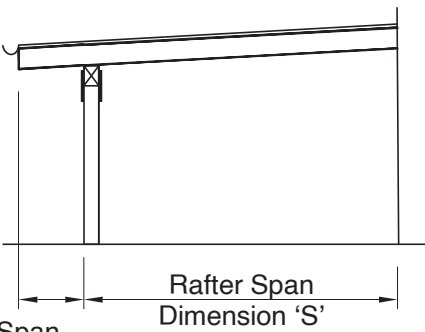
BUILDING WITH BOWMAC® STRAP, T & L BRACKETS



EXAMPLE AREAS

- Tributary roof area on connection 'C1' = $(S/2 + O/H) \times (B/2 + O/H)$
- Tributary roof area on connection 'C2' = $(S/2 + O/H) \times B$

LAYOUT & LOAD DIMENSIONS



Overhang Span Dimension 'O/H' **SECTION** A
SCALE: NTS

DESIGN NOTE

- The loads shown in the table are vertical in direction and principally upwards, i.e. wind loads.
- Design assumes brackets are on both sides of joints.

LOAD TABLE

Roof type	Wind zone	Max. Roof Area (m²)
Light*	Extra high	8
	Very high	10
	High	12
	Medium	12
	Low	12
Heavy*	Extra high	9
	Very high	12
	High	12
	Medium/Low	12