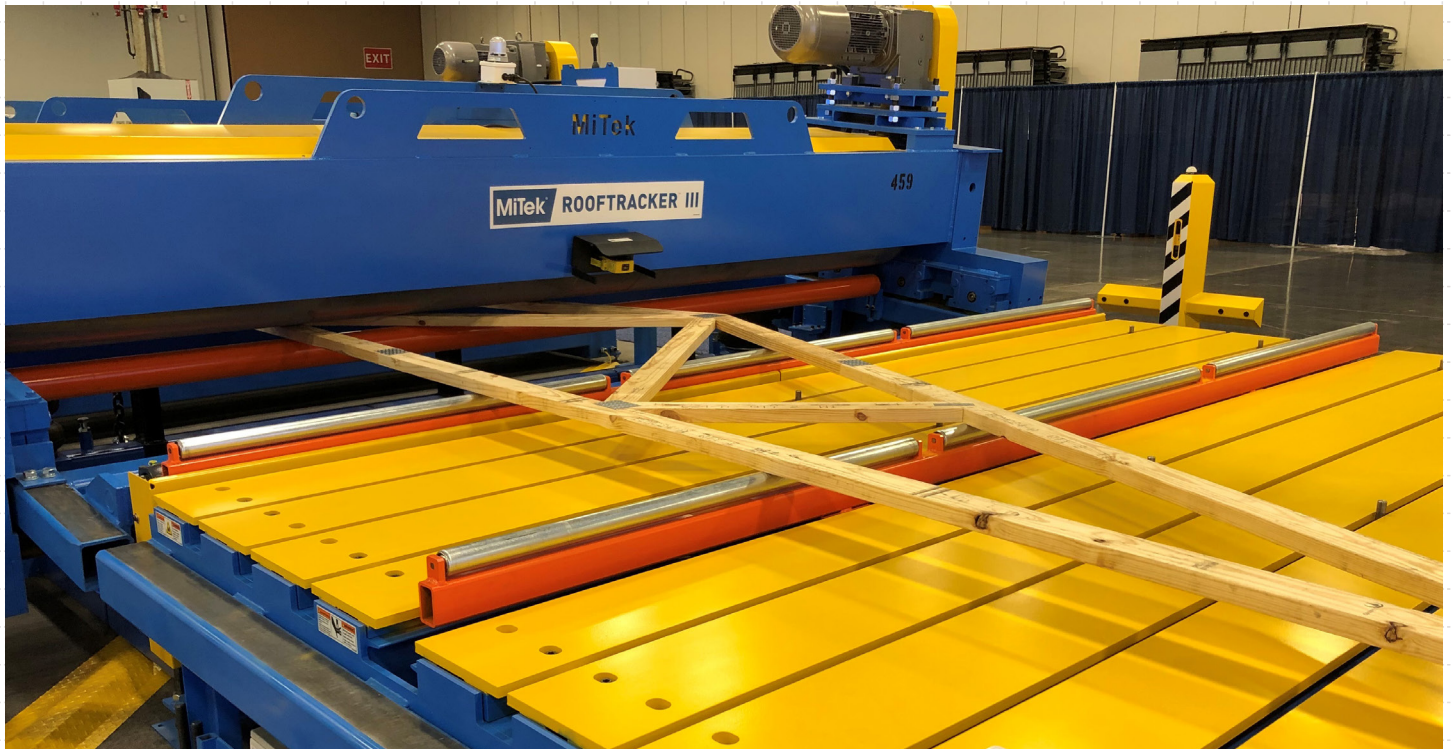


# ROOF TRACKER III<sup>®</sup>

## TRUSS ROLLER PRESS AND TABLE SYSTEM

- ➔ Trackless operation type gantry head
- ➔ 24" Heavy-duty roller press
- ➔ Dual press head parking zones
- ➔ Exteremly high load capacity
- ➔ Drive and pressure wheels carry head press
- ➔ Side eject or end eject lifters
- ➔ Operator platform and joystick controls
- ➔ Wizard automated tooling ready



### Description:

The RoofTracker III™ press is the latest in a long line of super productive trackless roller presses from MiTek. It's development comes from years of experience, extensive testing, and the best design practices available to create this state-of-the-art roof truss machine.

There are no floor rails to create a trip hazard. Instead, the RoofTracker III runs on beams mounted to the tables and its walk-through aisles provide clear access to the jiggging area, and better ergonomics. Tables are 4.2m high, 2.3 wide and Wizard automated tooling ready.

Overall, the RoofTracker III™ is a safer and more efficient press than its predecessors. It has a larger working area and with parking space reduced by 30% there is better use of the assembly area. In addition, the gantry head is shorter so the Finish Roller can be positioned closer to the gantry head.

# MiTek<sup>®</sup>

[www.mitek.nz.co.nz](http://www.mitek.nz.co.nz)



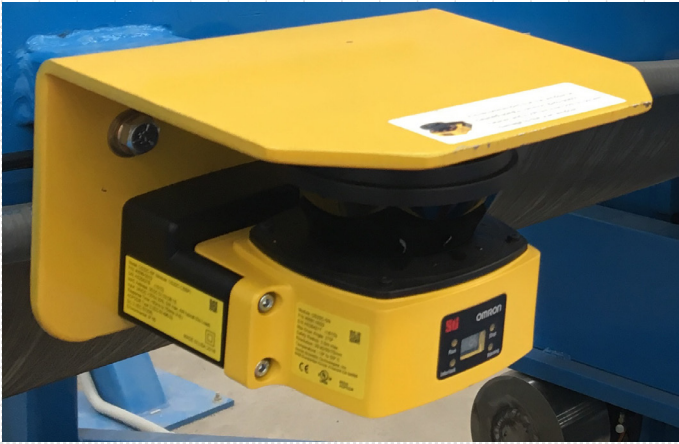
# ROOF TRACKER III®

## TRUSS ROLLER PRESS AND TABLE SYSTEM

The press has bolt-on wheels to move the press head smoothly along and requires minimal maintenance.

Safety features include safety laser scanners for operator protection.

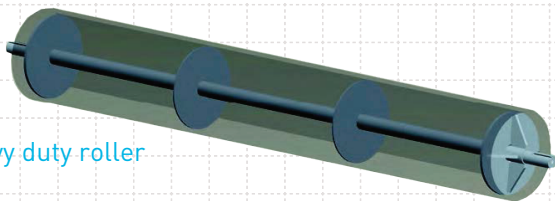
A beacon and buzzer will notify workers when the gantry head is about to start.



### Safety Feature - Safety laser scanners

The RoofTracker III™ press has a 15-hp single-speed gear motor that provides a travel speed of 50m per minute, but it can stop the press within millimeters in case of emergency. Braking distance is monitored to ensure the press stops safely everytime.

Standard electrical control designs include a fully integrated safety circuit with safety modules and redundant contacts for operator safety, and compliance with ANZ safety standards.



Heavy duty roller

### Options:

- Top-chord operator platform.
- Pendant controls.
- High-slope, auto-eject or end-eject.
- Continuous-top system or with walk through aisles.
- Wizard automated tooling - factory fitted.



# MiTek®

[www.mitek.nz.co.nz](http://www.mitek.nz.co.nz)

© Copyright 2019 MiTek Holdings, Inc. All rights reserved Sept 2019

