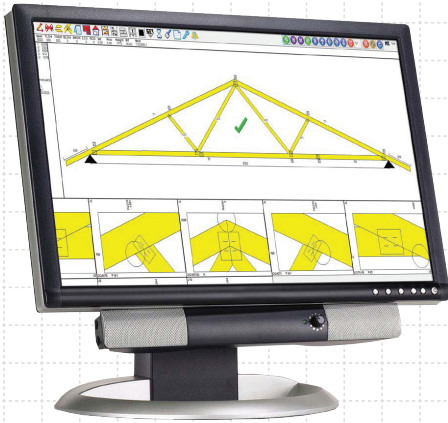


# RIGHT JIG & JIG LINK SOFTWARE

CREATED TO CONTROL AND IMPROVE THE PERFORMANCE OF AUTOMATED TABLE JIGGING.

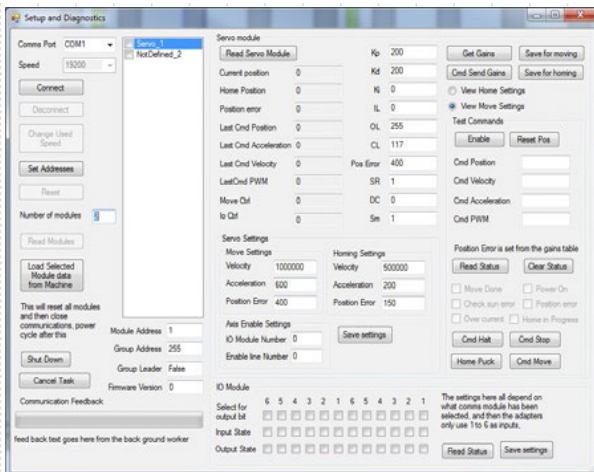


JigRight is truss jigging software created to control and improve the performance of automated table jigging. With the addition of the JigLink Toolbar within OptiFlow, it will work seamlessly with MiTek OptiFlow and JigCentre.



## Key features of the JigRight & JigLink software include:

- 1) The ability to setup different work station areas that can have various insertion points. Current options for truss targeting insertion points are:
  - a. Zero point of the truss as defined by the file.
  - b. Left or right heel of truss.
  - c. Apex peak (including truncated trusses).
  - d. Half truss vertical left or right.
- 2) The ability to be controlled remotely over a network (and works in conjunction with) MiTek OptiFlow & JigCentre.
- 3) Detailed diagnostics screens, and in the event of an error or breakdown the JigRight operator can easily email diagnostic data to a MiTek technician.
- 4) The software is stable, reliable, and fully supported by MiTek. It's designed to run on Window 7, Windows 8 and Windows 10. It is 32 bit and 64 bit compliant. Jig owners are no longer tied to the unsupported Windows XP operating system.
- 5) Trusses can be shifted left and right or up and down by a pre-set distance.
- 6) An inserted truss can be shifted from one station to the next, with the new station's insertion point being used. This allows for quick relocation of trusses to suit their size and preferred location.
- 7) A data file backup and restore facility.
- 8) User based access levels which can be used to restrict access to setup data.



# MiTek®

[www.mitek.nz.co.nz](http://www.mitek.nz.co.nz)

© Copyright 2019 MiTek Holdings, Inc. All rights reserved Sept 2019



# RIGHT JIG & JIG LINK SOFTWARE

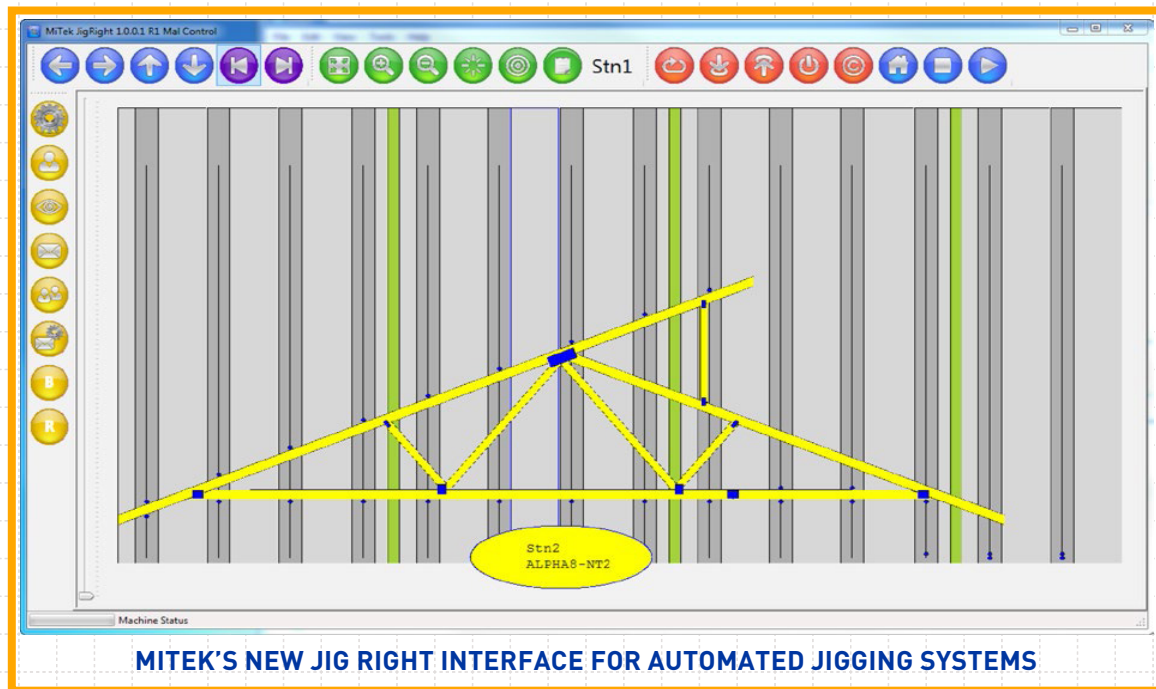
CREATED TO CONTROL AND IMPROVE THE PERFORMANCE OF AUTOMATED TABLE JIGGING.

## Introducing right Jig

JigRight is MiTek's new truss jigging software used for controlling automated table jigging.

Examples of its application include:

- replacing the PC software on a Mangotech MAL automated tooling system
- controlling a MiTek retrofitted automation on an AutoSet jigging system
- controlling a new automation system retrofitted to a MiTek Autojig.



The JigRight software provides a user interface for system setup, jigging control, and diagnostics, and is suitable for use on a touchscreen PC. In addition, the JigRight software has been tailored to work seamlessly with OptiFlow in a paperless environment.



# MiTek®

[www.mitek.nz.co.nz](http://www.mitek.nz.co.nz)

© Copyright 2019 MiTek Holdings, Inc. All rights reserved Sept 2019



# RIGHT JIG & JIG LINK SOFTWARE

CREATED TO CONTROL AND IMPROVE THE PERFORMANCE OF AUTOMATED TABLE JIGGING.

## Introducing right Jig

By adding the 'JigLink' Toolbar to the OptiFlow JigCentre screen, controls for the jigging are immediately available to the operator.

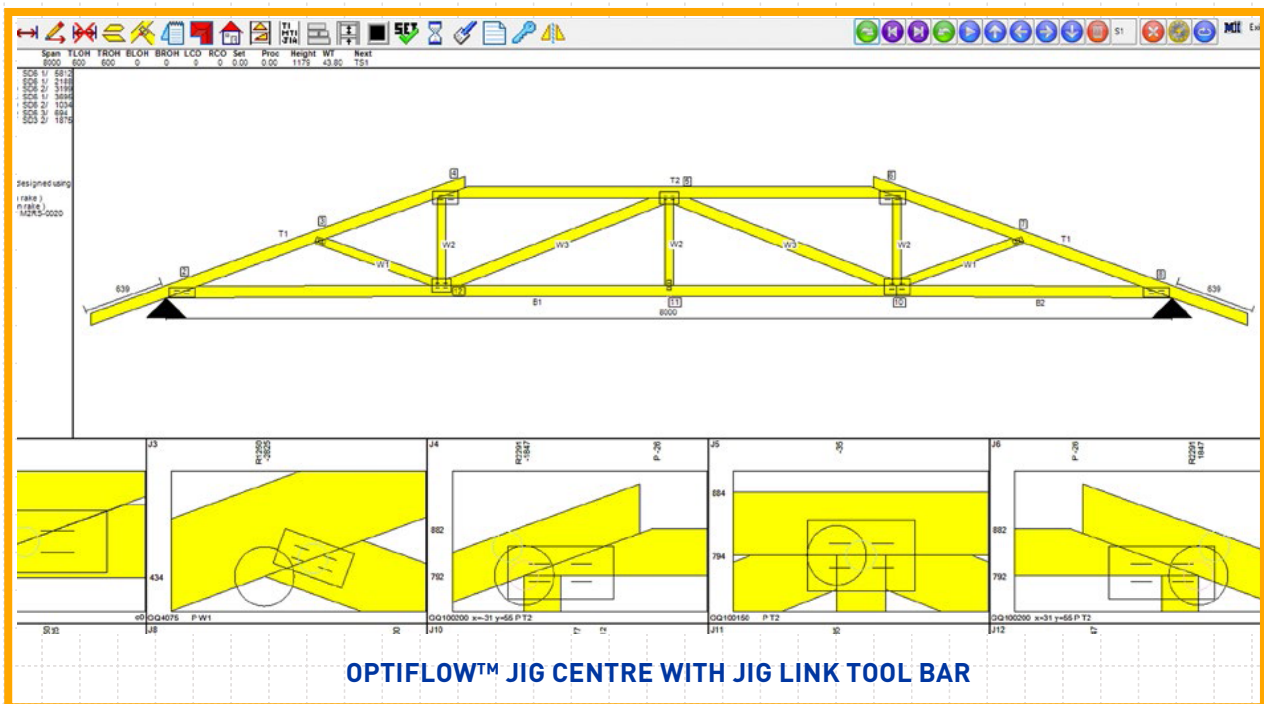
This means that normal operation of the jig is via the JigCentre screen so the operator doesn't have to work across two competing jig interfaces.



THE JIG LINK TOOLBAR LOCATED ON OPTIFLOW™ JIG CENTRE SCREEN

Functions such as 'add truss to jig', 'move pucks to position', etc, are buttons displayed in the JigLink toolbar on the Jig Centre PC.

In a 'remote control' fashion these buttons mimic the controls of the JigRight program.



OPTIFLOW™ JIG CENTRE WITH JIG LINK TOOL BAR



# MiTek<sup>®</sup>

[www.mitek.nz.co.nz](http://www.mitek.nz.co.nz)

© Copyright 2019 MiTek Holdings, Inc. All rights reserved Sept 2019